

## Ch 5.7 Reflections and Symmetry

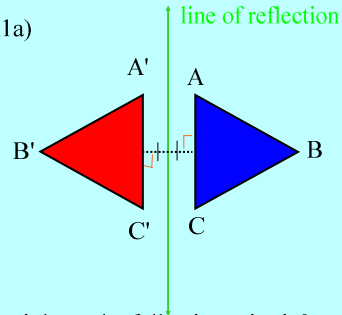
**reflection** - is a transformation that creates a mirror image.

**properties of reflection:**

- 
- 
- 

Jan 28-9:14 AM

Ex1a)

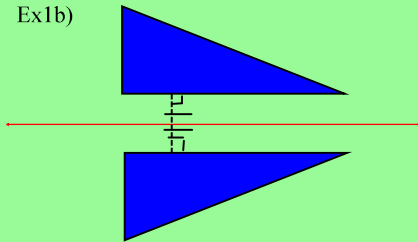


Does it have the following criteria?

- the images are congruent
- the image is reversed
- the dotted line is the perpendicular bisector.

Jan 28-9:21 AM

Ex1b)

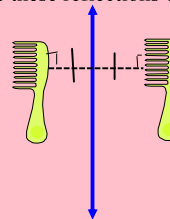


Does it have the following criteria?

- the images are congruent
- the image is reversed
- the dotted line is the perpendicular bisector.

Jan 28-9:29 AM

Ex1c) Are these reflections of each other?



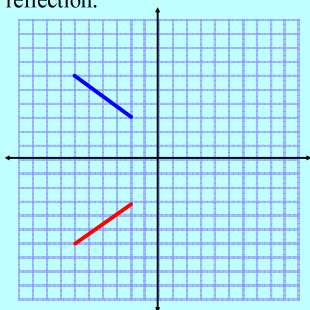
Does it have the following criteria?

- the images are congruent
- the image is reversed
- the dotted line is the perpendicular bisector.

Jan 28-9:34 AM

## Reflections in a coordinate plane

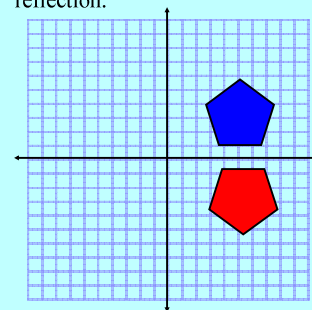
Ex2a) Tell whether the red figure is a reflection of the blue figure. Then name the line of reflection.



Jan 28-9:41 AM

## Reflections in a coordinate plane

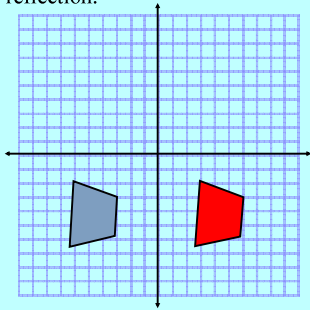
Ex2b) Tell whether the red figure is a reflection of the blue figure. Then name the line of reflection.



Jan 28-9:41 AM

### Reflections in a coordinate plane

Ex2c) Tell whether the red figure is a reflection of the blue figure. Then name the line of reflection.

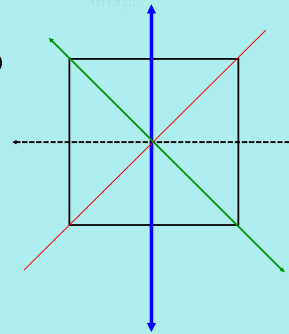


Jan 28-9:41 AM

### Line of Symmetry:

is the line where an object can be cut into half and produce a mirror image.

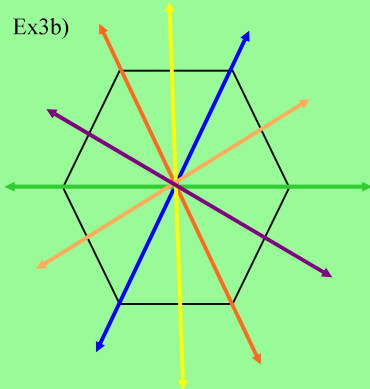
Ex3a)



A square has 4 lines of symmetry.

Jan 28-12:03 PM

Ex3b)



Regular Hexagon has 6 lines of symmetry.

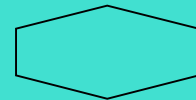
Jan 28-12:39 PM

Determine the lines of symmetry for the following figures:

1.



2.



Jan 28-12:43 PM

Jan 28-9:45 AM