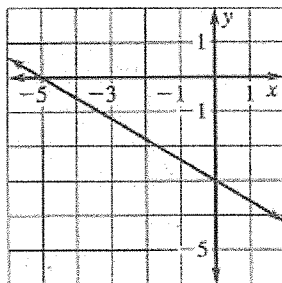


Name: \_\_\_\_\_

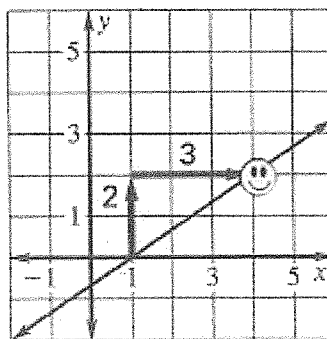
## Writing Equations Review

1. Write an equation of the line whose slope is  $m = -3$  and whose y-intercept is  $b = 7$ . in slope intercept form.
2. Write an equation of the line shown in the graph. in slope intercept form.



3. Write an equation of the line that passes through  $(-3, -9)$  and has a slope of  $m = 4$ . Write the equation in slope-intercept form.
4. Write an equation in slope-intercept form of the line that passes through  $(4, 6)$  and  $(-8, 3)$ .

5. Write an equation of the line shown in the graph. in point slope form.



6. Write an equation in point-slope form of the line that passes through  $(3, 7)$  and  $(-5, 4)$ .
7. Write an equation in point-slope form of the line that passes through  $(-7, 1)$  and has a slope of  $m = \frac{1}{2}$ .
8. Write  $y = -\frac{3}{4}x + 3$  in standard form.
9. Write an equation in standard form of a line that has a slope of  $-2$  and goes through  $(-1, 4)$ .
10. Write an equation in standard form of a line that goes through  $(5, 3)$  and  $(4, 5)$ .
11. You are buying snow boarding equipment for \$250 and it costs \$32 a day to go to Snow Star. Write an equation to model how much it will cost you to go snow boarding?
12. You are trying to save \$500 to buy a new ipad2. You are babysitting for \$4.00 an hour and walking dogs for \$8 each walk. Write an equation to model the situation.