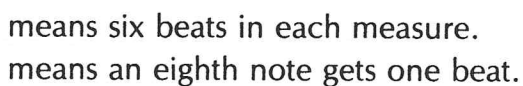
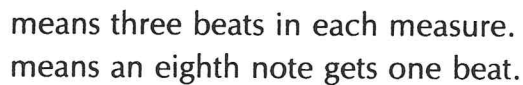
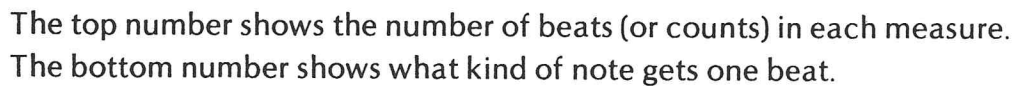


..

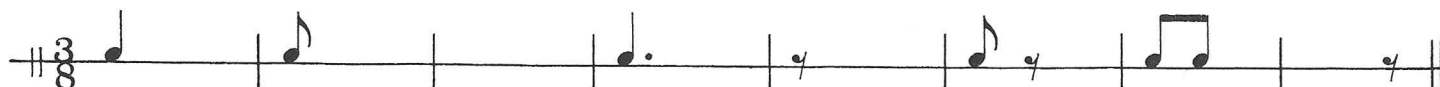


A number line from 0 to 6. The fraction $\frac{6}{8}$ is written above the line. A solid dot is placed at 1, and a dashed dot is placed at 4.

-

-

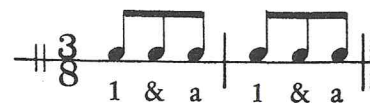
-
- The first staff of music begins with a treble clef, a key signature of one sharp (F#), and a 6/8 time signature. The melody consists of the following notes: G4 (quarter), A4-B4 (beamed eighth notes), C5 (quarter), B4-A4 (beamed eighth notes), G4 (quarter), F#4 (quarter), E4 (quarter), D4 (quarter), C4 (half), and B3 (half). The staff ends with a double bar line.



LESSON 54



ANOTHER WAY TO COUNT

When $\frac{3}{8}$ time is played at a fast tempo, it is usually counted "in 1".

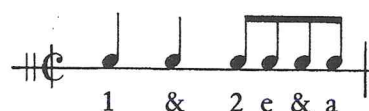
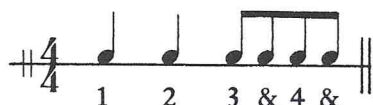


When $\frac{6}{8}$ time is played at a fast tempo, it is usually counted "in 2".



Sometimes $\frac{4}{4}$ time is indicated with the letter C which stands for COMMON TIME. It is just another way of saying $\frac{4}{4}$ time.  and  mean exactly the same thing.

If the C is cut in half (♢) it is called CUT TIME or ALLA BREVE. It means the $\frac{4}{4}$ is cut in half to $\frac{2}{2}$. The music would sound the same but it is counted "in two".



Write the counting under the following lines. Then count the beats and clap the rhythm.

Slowly "in 3"



Fast "in 1"



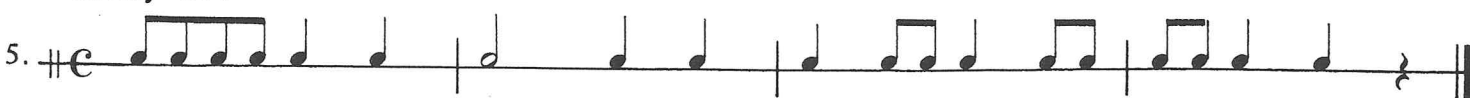
Slowly "in 6"



Fast "in 2"



Slowly "in 4"



Fast "in 2"



LESSON 55

TRIPLETS

A **TRIPLET** is a group of three notes that are performed in the space normally allotted for two of the same kind of note.

The image contains three musical staves, each with a key signature of one sharp (F#) and a time signature of 2/4 or 4/4. The first staff is in 2/4 time and shows two measures of eighth-note triplets. The second staff is in 4/4 time and shows four measures of eighth-note triplets. The third staff is in 2/4 time and shows four measures of eighth-note triplets. Each measure is labeled with a number and a triplet symbol (&).

SYNCOPE

In jazz, rock, and pop, as well as in classical music, the accents sometimes come on the normally weak divisions of the beat, adding new excitement to the music. This is called syncopation.

The image shows two musical exercises on a single staff. The first exercise is in 4/4 time, indicated by the time signature $\frac{4}{4}$. It consists of two measures. The first measure contains four eighth notes with stems pointing up, labeled 1, & (2), &, and 3. The second measure contains four eighth notes with stems pointing up, labeled 1, & (2), &, and 3. The second exercise is in 3/4 time, indicated by the time signature $\frac{3}{4}$. It also consists of two measures. The first measure contains three eighth notes with stems pointing up, labeled 1, & (2), and 3. The second measure contains three eighth notes with stems pointing up, labeled 1, & (2), and 3. Both exercises are marked with a double bar line at the end.

Add the bar lines in the following lines and write the counting under each measure. Then count the beats and clap the rhythms.

LESSON 56

REVIEW OF LESSONS 53–55

1. In $\frac{3}{8}$ time, an _____ note receives one beat.
2. In $\frac{3}{8}$ time, there are _____ beats in each measure.
3. In $\frac{6}{8}$ time, there are six beats in each _____.
4. In $\frac{6}{8}$ time, an eighth note receives _____ count.
5. When $\frac{3}{8}$ time is played fast, it is counted "in _____".
6. When $\frac{6}{8}$ is played fast, it is counted "in _____".
7. _____ is the symbol for common time.
8. C is the symbol for _____ time.
9. Cut time is also called _____ Breve.
10. A triplet is a group of _____ notes.
11. When accents are placed on weak beats, it is called _____.

Add the bar lines and write the counting under each measure. Then count the beats and clap the rhythm.

Fast "in 1"

12. $\sharp\frac{3}{8}$

Fast "in 2"

13. $\sharp\frac{6}{8}$

14. $\sharp\frac{4}{4}$

15. $\sharp\frac{2}{4}$

16. Write an E^b scale, using a syncopated rhythm pattern. First write the key signature, then the $\frac{4}{4}$ time signature.

